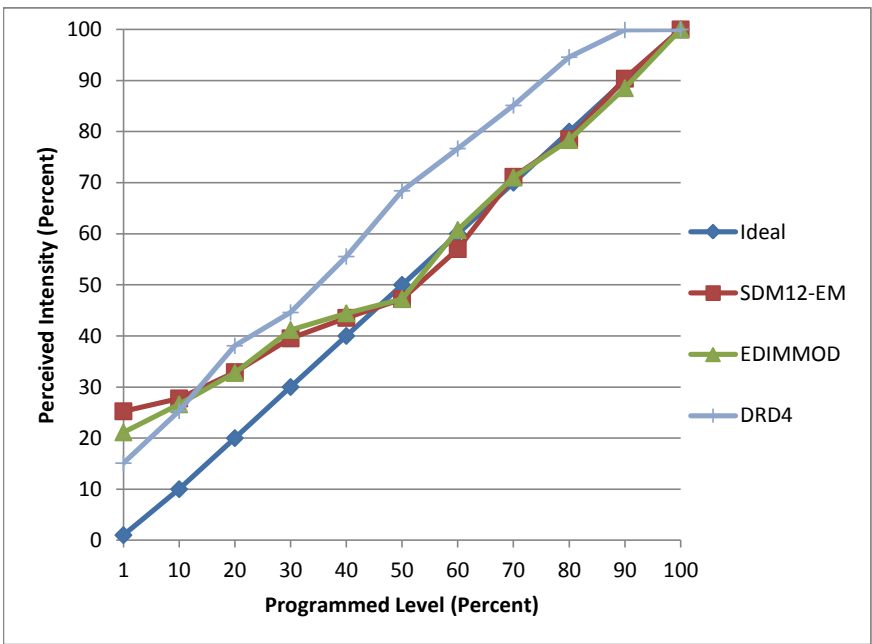


**Manufacturer** Lithonia  
**Model** 4G1BN LED  
**Description** LED Retrofit Downlight for 4" can  
**Driver** integral  
**Nominal Power (W)** 8.2  
**Dimming Control** Forward- and Reverse-phase  
**Product Range**  
**Test Date** 9/23/2014

Dimmer Tested Against:	SDM12-EM	EDIMMOD	DRD4
Pass/Fail	Pass	Pass	Pass
Best-Fit Power Profile:			Standard
Minimum ON	5	3	6
Maximum ON	82	80	
Adjust	90	75	
Light Output Range (vs. non-dimmed)			
Maximum (Perceived)	95.5%	96.4%	100.0%
Minimum (Perceived)	24.1%	20.4%	15.1%
Minimum (Measured)	5.8%	4.2%	2.3%

Linearity Curves (Best-fit Power Profile Applied):



Observations: