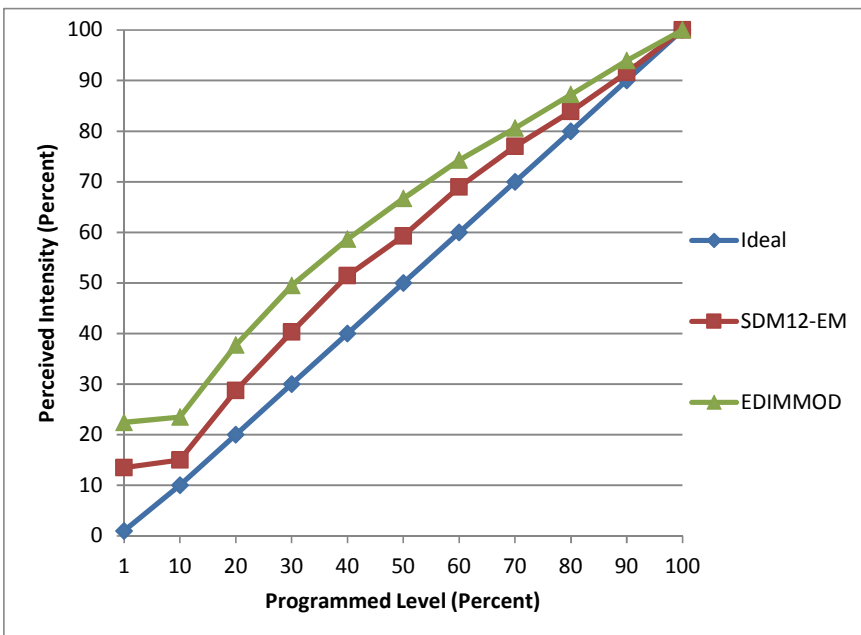


Manufacturer GE
Model LED10DR303/827W
Description BR30 Lamp
Driver Integrated
Nominal Power (W) 10
Dimming Control Forward- and reverse-phase
Product Range
Test Date 4/2/2015

Dimmer Tested Against:	SDM12-EM	EDIMMOD	
Pass/Fail	Pass	Pass	
Best-Fit Power Profile:			
Minimum ON	0	0	
Maximum ON	93	92	
Adjust	100	100	
Light Output Range (vs. non-dimmed)			
Maximum (Perceived)	95.2%	95.2%	
Minimum (Perceived)	12.8%	21.4%	
Minimum (Measured)	1.7%	4.6%	

Linearity Curves (Best-fit Power Profile Applied):



Observations: