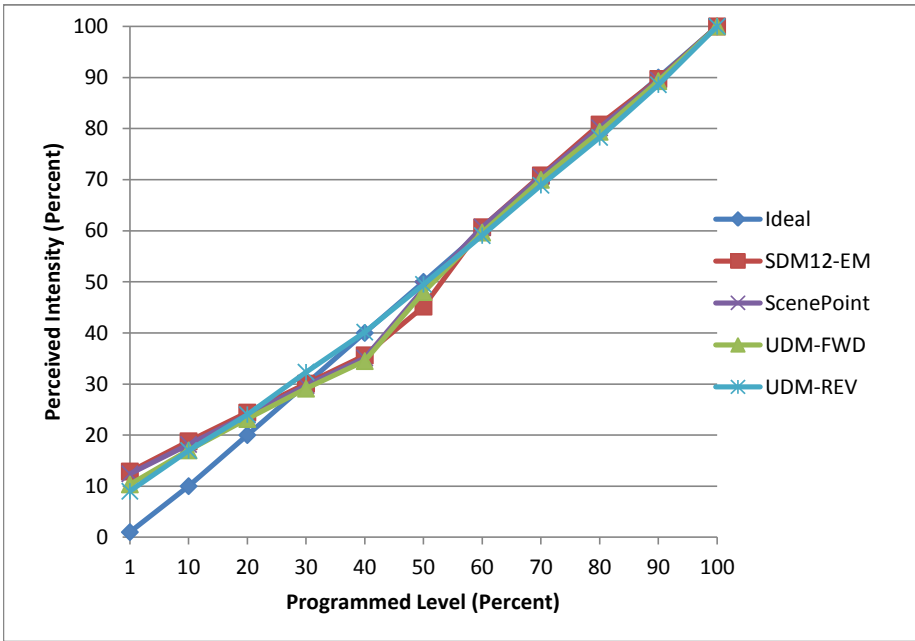


Manufacturer Eaton
Model LD6A20D010TE
Description 6 in Downlight
Driver Eaton XEL-030DEU-CX350-042-DNT02
Nominal Power (W) 15
Dimming Control Forward and Reverse
Product Range -
Test Date 9/29/2016 11/1/2016

Dimmer Tested Against:	SDM12-EM	Scenepoint	UDM-FWD	UDM-REV
Pass/Fail	Pass	Pass	Pass	Pass
Best-Fit Power Profile:				
Minimum ON	6	6	5	19
Maximum ON	82	83	84	86
Adjust	60	60	60	20
Light Output Range (vs. non-dimmed)				
Maximum (Perceived)	95.1%	95.3%	95.7%	95.5%
Minimum (Perceived)	12.2%	11.8%	9.9%	8.6%
Minimum (Measured)	1.5%	1.4%	1.0%	0.7%

Linearity Curves (Best-fit Power Profile Applied):



Observations:

Start is slow

bgk