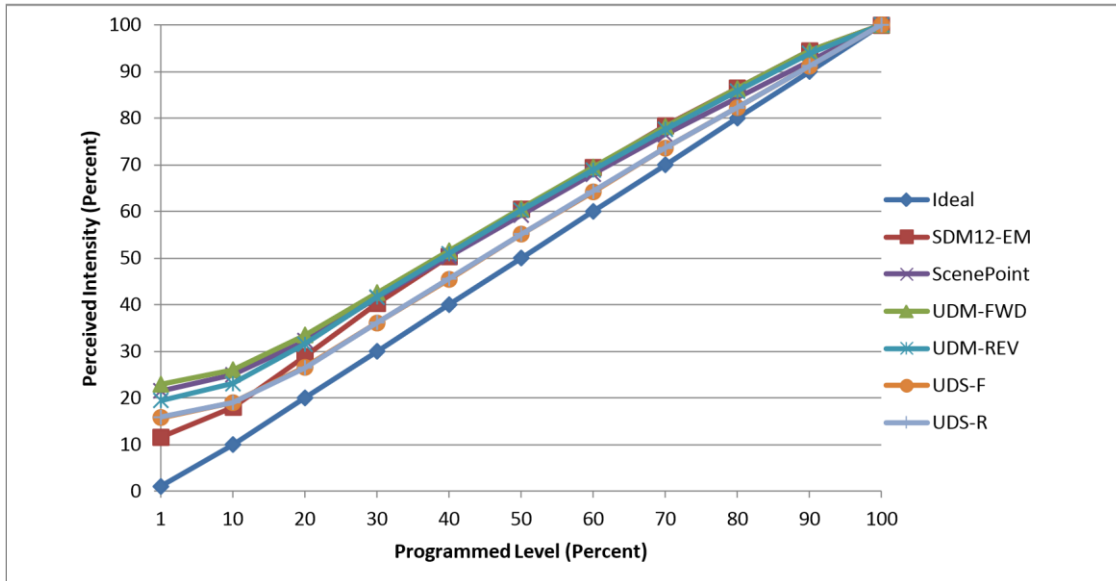




Manufacturer DMF Light
Model DRD2M7930
Description 750 lumen 4" puck light
Driver built-in
Nominal Power (W) 11.8
Dimming Control Forward and Reverse Phase
Product Range DRD2M
Test Date 4/30/2018

Dimmer Tested Against:	SDM12-EM	SCP	UDM-FWD	UDM-REV	UDS-F	UDS-R
Pass/Fail	Pass	Pass	Pass	Pass	Pass	Pass
Best-Fit Power Profile:						
Minimum ON	1	3	3	3	3	3
Maximum ON	72	78	74	75	81	81
Adjust	100	100	100	100	100	100
Light Output Range (vs. non-dimmed)						
Maximum (Perceived), 120V	95.1%	95.3%	95.2%	95.3%	95.0%	94.9%
Minimum (Perceived)	11.0%	20.5%	21.8%	18.6%	15.0%	15.0%
Minimum (Measured)	1.2%	4.2%	4.8%	3.4%	2.3%	2.3%

Linearity Curves (Best-fit Power Profile Applied):



Observations: Inconsistent on delay when tested with multiple fixtures if initially turned on to low levels. Tested in one and five fixture configurations. Results given are for five fixture set up.

jwm