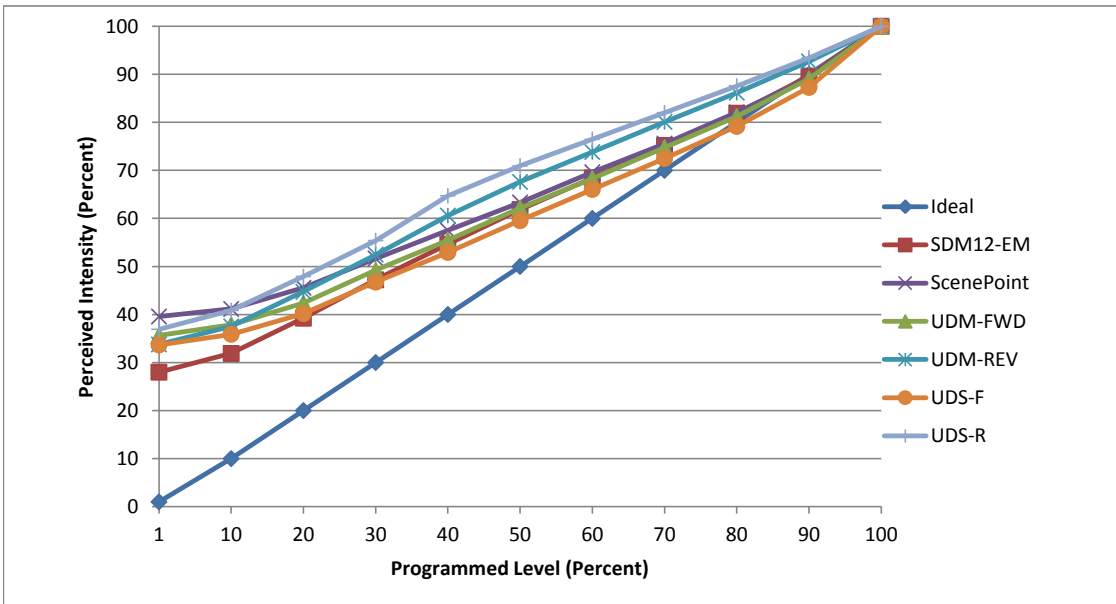


Manufacturer American Lighting
Model SPTL-WW
Description Tape Light
Driver LP-DR40-24
Nominal Power (W) 40
Dimming Control Forward and Reverse Phase
Product Range -
Test Date 10/6/2017

Dimmer Tested Against:	SDM12-EM	SCP	UDM-FWD	UDM-REV	UDS-F	UDS-R
Pass/Fail	Pass	Pass	Pass	Pass	Pass	Pass
Best-Fit Power Profile:						
Minimum ON	10	15	13	7	17	5
Maximum ON	92	94	94	84	96	80
Adjust	100	100	100	100	100	100
Light Output Range (vs. non-dimmed)						
Maximum (Perceived), 120V	94.9%	95.5%	95.7%	95.1%	95.3%	95.0%
Minimum (Perceived)	26.6%	37.8%	34.1%	32.1%	32.1%	35.1%
Minimum (Measured)	7.1%	14.3%	11.6%	10.3%	10.3%	12.3%

Linearity Curves (Best-fit Power Profile Applied):



Observations:

bgk